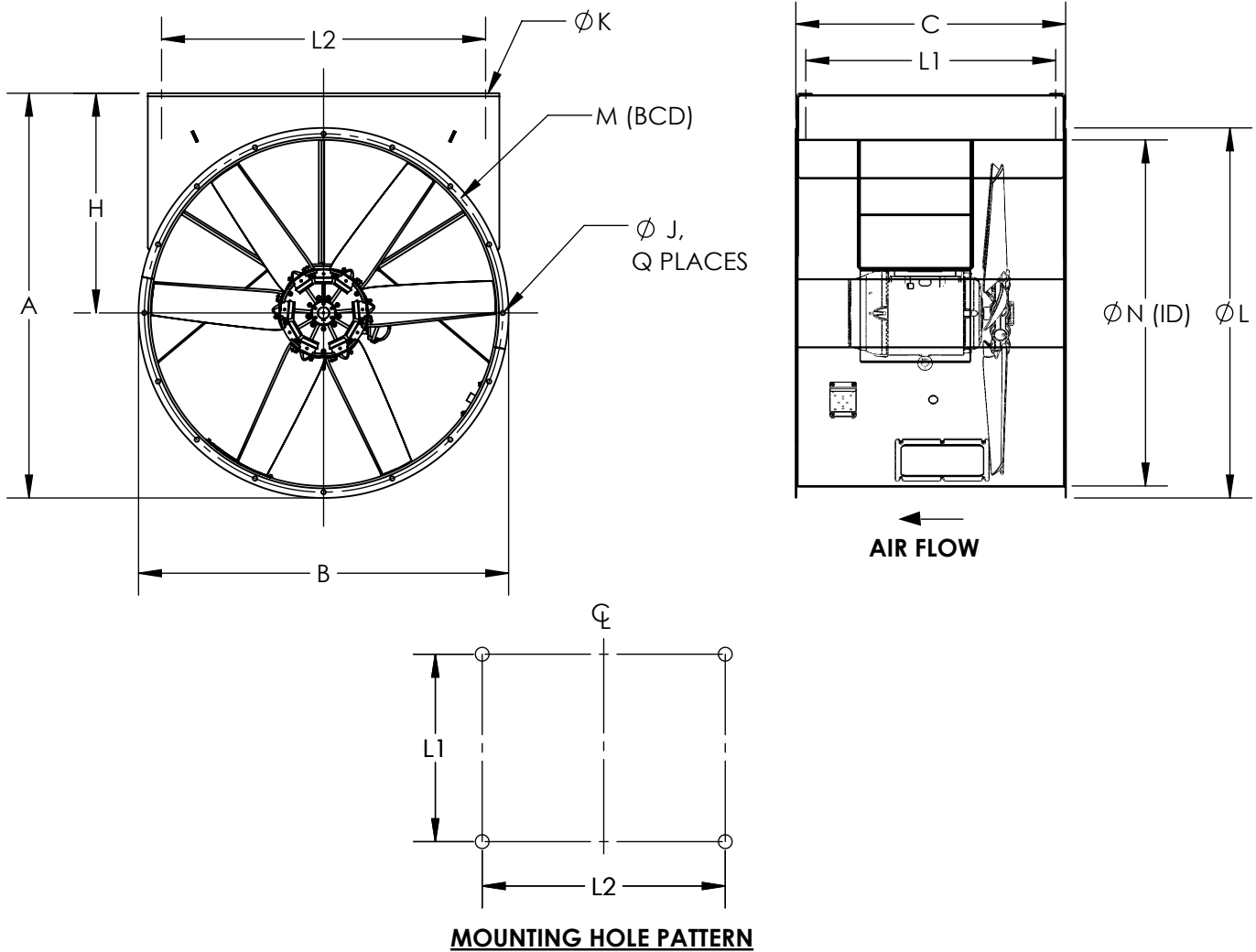


AXIAL WAREHOUSE EXHAUST FAN  
 ARRANGEMENT 4, LEVEL 2, HORIZONTAL, CEILING HUNG



**STANDARD CONSTRUCTION:**

1. High efficiency adjustable pitch, cast aluminum airfoil propeller (06 or 09 blades)
2. Bolted access door
3. Bolted switch bracket
4. Air dry enamel coating

**ACCESSORIES:**

1. NEMA 3R service switch
2. Mounting rails
3. Vibration isolators
4. Extended lubrication lines (PVC or copper)
5. Drain
6. Companion flange
7. Inlet bell
8. Inlet/outlet guard
9. VFD

**DIMENSIONAL DATA:**

| SIZE            | A      | B      | C      | H  | J     | K     | L      | M      | N  | Q  | L1     | L2 | MIN. MTR FRAME | MAX. MTR FRAME | UNIT WEIGHT (LESS MOTOR) |
|-----------------|--------|--------|--------|----|-------|-------|--------|--------|----|----|--------|----|----------------|----------------|--------------------------|
| <b>AWX-1600</b> | 73 3/4 | 67 3/8 | 49 1/8 | 40 | 13/16 | 13/16 | 67 3/8 | 65 1/4 | 63 | 16 | 45 1/2 | 59 | 256T           | 326T           | 1125                     |

ALL DIMENSIONS ARE INCHES AND WEIGHTS IN LBS.

REVISION:

FORM:

REPLACES: